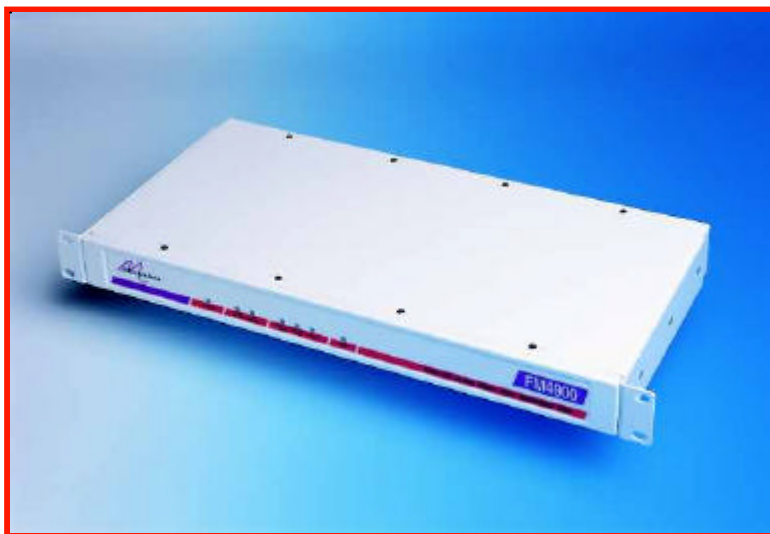


# FM4900

E3 G.703 to HSSI Converter



- High Spec E3 G.703 34.368 Mbps interfacing
- HSSI Data port
- External Alarm relay port
- Remote configuration and testing of units across the network
- Comprehensive performance monitoring of both device and line
- Optional SNMP management
- Optional integrated -48 volt DC supply
- Built to European Standards



FM4900  
datasheet

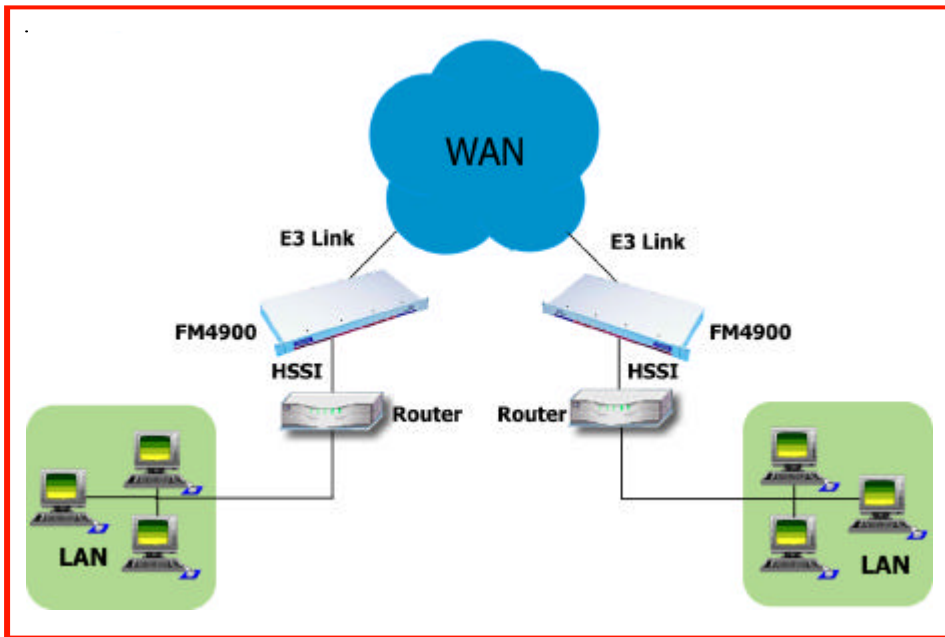
The Metrodata FM4900 DSU is used to interface high performance DTE equipment such as bridges or routers to 34.368 Mbps E3 services. The DTE equipment presents an HSSI interface. FM4900s are used in pairs with one unit at either end of the Wide Area link. Error conditions and usage statistics are gathered and stored by the FM4900. Unit set-up is done via a comprehensive menu system which is accessed via a local or remote terminal. The optional Metrodata LM1100 SNMP Enabler permits management via a LAN using an SNMP system. There is a choice of 100-250 VAC or -48 VDC integrated power supplies.

#### About Metrodata

Founded in 1989 and based near London's Heathrow airport, Metrodata is a leading designer and manufacturer of datacommunications hardware for Fixed line, Satellite, Enterprise and Carrier networks. Specialising in interoperability and interconnectivity, Metrodata offers a range of Standard, Niche and System Integrated type products. These include Media converters, Interface converters, Fibre converters, Ethernet extenders and ATM switching and Circuit emulation products. Other specialist products manage high data rates and clock sensitive applications to ensure higher network performance. Metrodata provides COTS products to the commercial, government and defence sectors, as well as developing turnkey products to specific customer requirements. For more information and data on Metrodata products, visit our web site at [www.metrodata.co.uk](http://www.metrodata.co.uk)

# FM4900

## Application Diagram



datasheet FM4900

### Specifications

<b>Line E3 Interface</b>		<b>Status LED &amp; Diagnostics</b>	
Port	G.703, 75 ohm unbalanced	Loopbacks	NI Local loop, NI Remote loop, DTE loop, DTE External loop
Framing	G.751 or Unframed	Statistics	Per G.821, 15min, 24 hour totals
Interface	BNC (75 ohm)	Major Alarm	LOS, LOF, SQ
Line coding	HDB3	Minor Alarm	AIS, RAI
Bit rate	34.368 Mbps +/- 20ppm	Data	DTE Tx Data, DTE Rx Data, DTE fault
Cable length	E3 BNC RG59 = 150m E3 BNC UR202 = 180m	Test	Test via menu, Test LED on front panel
<b>DTE Interface</b>		<b>Compliance &amp; Approvals</b>	
Port	HSSI per EIA 613, EIA 612	Performance	G.703, G.751, G.823, CTR 24 BABT# NS/ 4043 / I / V / 606274, NTR6
Interface	50-way AMP (SCSI II connector)	Safety	EN41003, EN 60950
Bit Rate	34.099 Mbps (Line Framed) 34.368 Mbps (Line Unframed)	EMC	EN55022, EN50082
<b>Configuration &amp; Management</b>		Statistics	G.821, AT&T 54016:15 min, 24hr totals
Type	Menu driven	Management	RFC1213 (MIB II), RFC1495 (telnet), RFC1157 (SNMP), RFC1407 (DS3/E3) MetroDte MIB (DSU), RFC1215 (Traps)
Access	System console, telnet, SNMP	<b>Environment</b>	
Interface	V.24, Ethernet 10baseT via RJ45	Temp	0 - 50 deg C
Security	Access by 2-level password	Humidity	0 - 95% RH, non-condensing
System	Non-volatile set-up	Pressure	86-106 KPA
Clock modes	Internal, Loop	<b>Packaging</b>	
<b>Power supply</b>		Type	1U, 19 inch rackmount
AC Mains	100-250 VAC, 50-400 Hz, 50 mA, IEC	Dimensions	435 x 213 x 44 mm (W x D x H)
-48 VDC	-36 to -72 VDC, 200-100 mA		

FM4900 Part Numbers	AC Mains:100-250 VAC	DC Power: -48 VDC
E3 Line: BNC DTE: HSSI	80-05-015	80-21-015
LM1100 SNMP Enabler	14-02-139	14-02-139

For more about Metrodata products, visit our website at [www.metrodata.co.uk](http://www.metrodata.co.uk)  
 Metrodata reserves the right to change specifications without notice.  
 Please check when ordering.

