

DC3000

E1 (n*64K) G.703/G.704-X.21
Converter

- Cost Effective E1 G.703/G.704 2.048 Mbps Interfacing
- X.21 Port for Router connection
- Fractional n*64K support
- Easy to install & maintain
- External Alarm relay port
- Built to European Standards



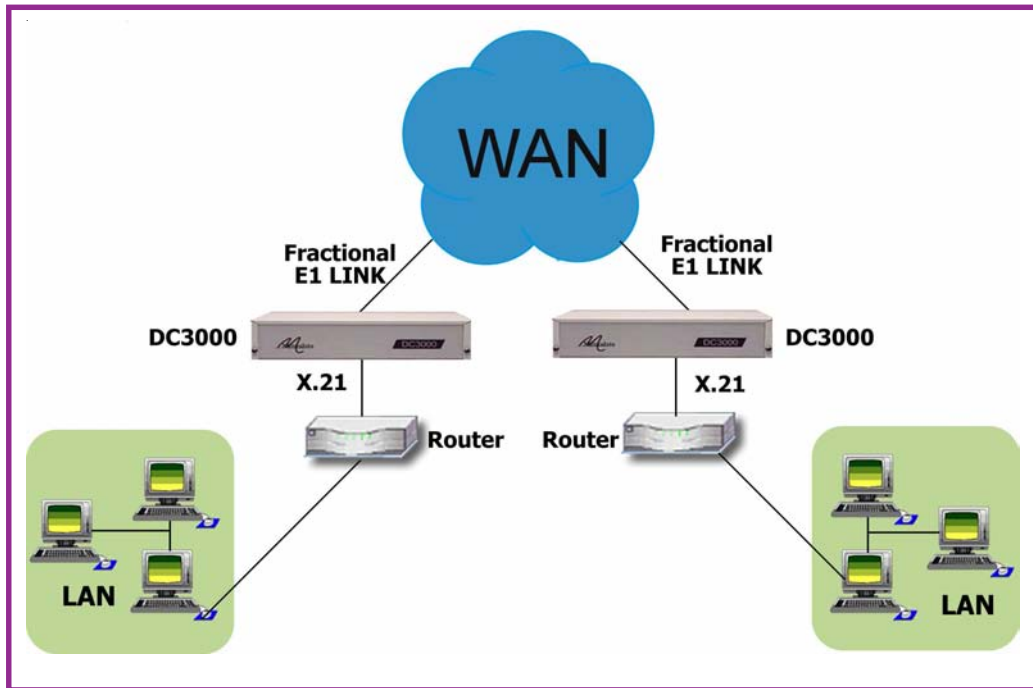
The DC3000 provides a new level of price/ performance in connecting switches and routers to a structured E1 G.703/G.704 2.048Mbps leased line.

Connecting a LAN bridge or router to a 2Mbps leased line requires a G.703 Interface. The DC3000 spans the gap between the synchronous interface of a bridge or router and the E1 leased line on a fractional E1 basis of 64Kbps per timeslot, up to a maximum of 31 timeslots for a single E1 line. If timeslot 16 is by-passed, then a maximum of 30 channels can be accommodated. The DC3000 offers an X.21 interface and BNC or RJ45 connectors for the E1 Line interface. The DC3000 is configured by setting bit-switches. There is a choice of 100-250 VAC or -48 VDC integrated power supplies.

About Metrodata

Founded in 1989 and based near London's Heathrow airport, Metrodata is a leading designer and manufacturer of datacommunications hardware for Fixed line, Satellite, Enterprise and Carrier networks. Specialising in interoperability and interconnectivity, Metrodata offers a range of Standard, Niche and System Integrated type products. These include Media converters, Interface converters, Fibre converters, Ethernet extenders and ATM switching and Circuit emulation products. Other specialist products manage high data rates and clock sensitive applications to ensure higher network performance. Metrodata provides COTS products to the commercial, government and defence sectors, as well as developing turnkey products to specific customer requirements. For more information and data on Metrodata products, visit our web site at www.metrodata.co.uk

Application diagram



DC3000

datasheet

Specifications

Line E1 Interface		Environment	
Port	G.703, 75 ohm unbalanced, 120 ohm balanced	Temp	0 - 50 deg C
Interface	BNC (75 ohm), RJ45 (120 ohm)	Humidity	95% RH, non-condensing
Framing	G.704 (with or without CRC4) or unframed	Pressure	86-106 KPA
Line Coding	HDB3	Status Display	
Bit Rate	2.048 Mbps +/- 50 ppm	Type	Status LED on rear panel
Barrier	Fully barriered per EN41003	Off	Mains power off
Cable lengths	RG59 = 600m UR202 = 750m	Red	Loss of Signal (LOS)
		Green	Unit OK
DTE Interface		Power supply	
Port	X.21	AC Mains	100-250 VAC, 50-60 Hz, 35 - 15 mA IEC connector
Interface	15-way female D-type	-48VDC Supply	-40 to -72 VDC, 100-50mA
Bit Rate	2.048 Mbps or n*64Kbps (n=1 to 31)	Power Consumption	3.5 watts approx when operating
Configuration		Packaging	
Clocks	Internal, E1 Loop, Terminal, DTE mode Set by rear dip switches	Type	Modem, 1U high without feet
Set-up	Start timeslot: 1 to 31 Bandwidth: 1 to 31 CRC4: Enable/Disable Timeslot 16 bypass: Enable/ Disable	Dimensions	W x Dx H mm
		Rackmount	202 x 132 x 44 (without feet)
		Desktop	202 x 132 x 48 (with feet)
Compliance & Approvals		Power supply DC3000 Part No	
Performance	PD7024 (NTR4)	100-250 VAC Mains	80-05-230
Safety	EN41003, EN60950	-48 VDC Supply	80-21-230
EMC	EN55022, EN50082	Rackmount kits Model No	
		1U 2 unit AC mains	80-05-256
		6U 18 unit AC mains	80-05-250
		6U 18 unit DC supply	80-05-255

For more data on Metrodata products and services, visit our website at www.metrodata.co.uk
 Metrodata reserves the right to change specifications without notice.
 Please check when ordering.

